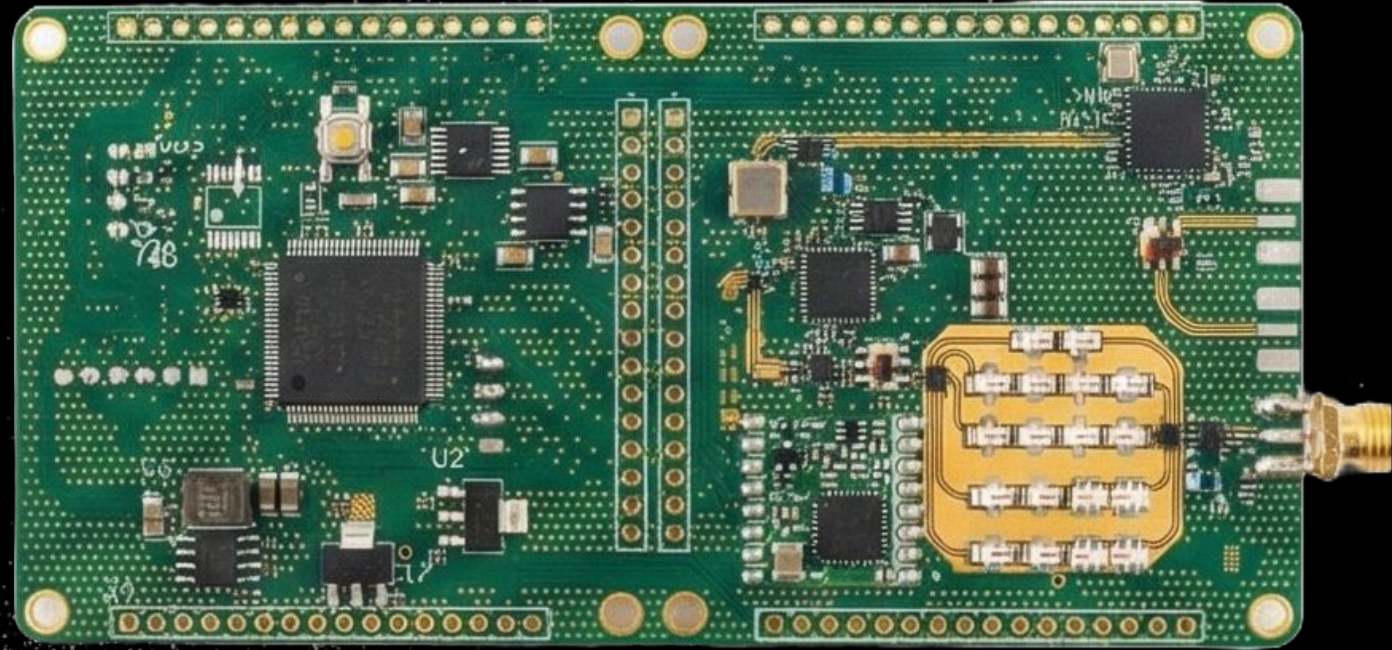


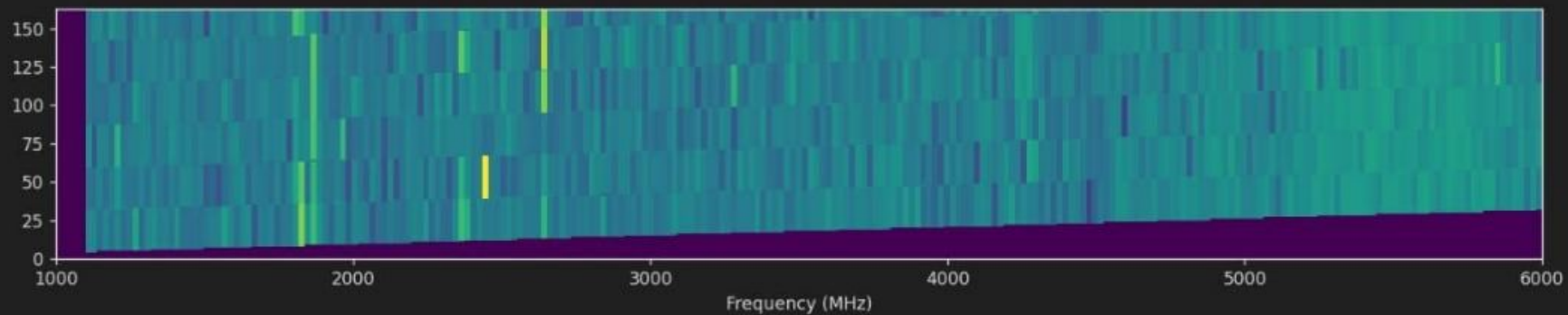
Drone proximity module



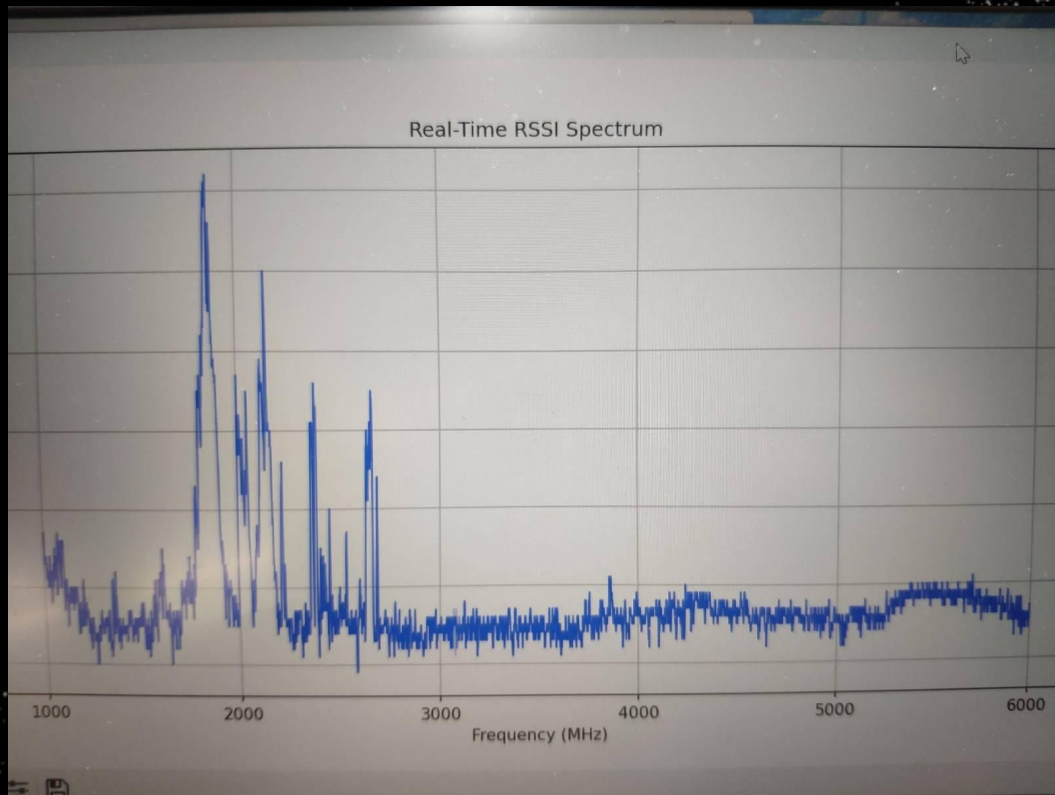
Compact/plain view



1040-2600 min:0, max:120 | 2900-3800 min:0, max:56 | 4000-6000 min:0, max:125



Spectrum data from USS evaluation



1. Band 3 (1800 MHz)
2. Band 1 (2100 MHz)
3. Band 7 (2600 MHz)

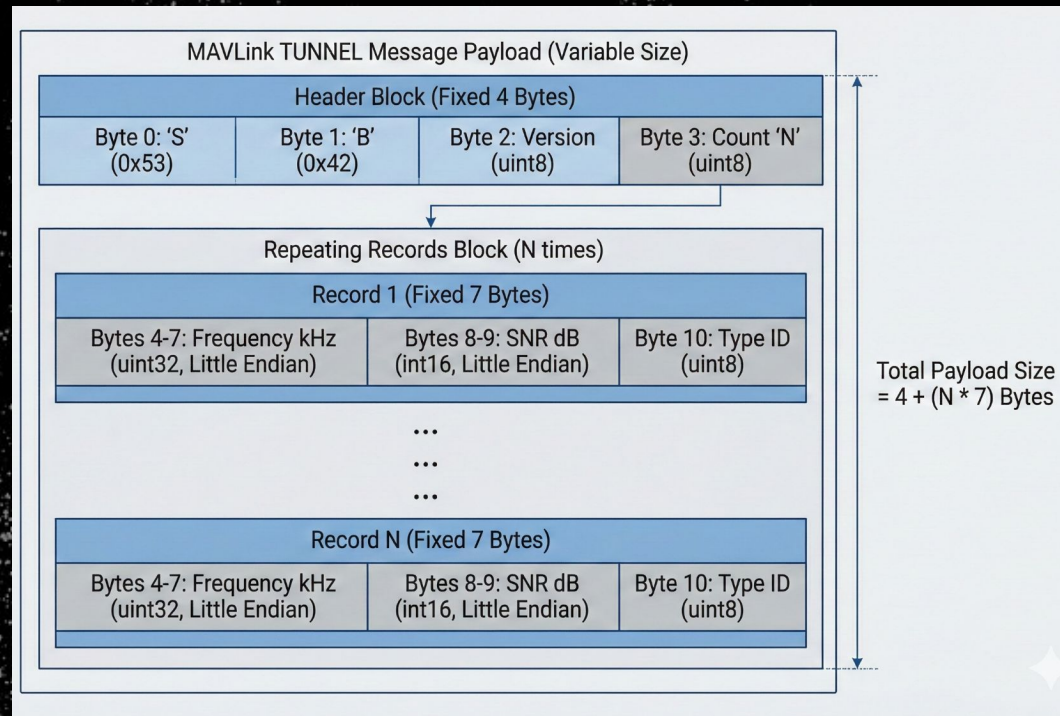
Available information output:

Output Interface

- **Physical:** RS-232
- **Protocol:** MAVLink over UART
- **Video:** Analog Output

Key Features

1. **Threat Detection:** MAVLink drone threat reporting.
2. **Spectrum Data:** Real-time RSSI streaming.
3. **Video Feed:** Analog video pass-through.
4. **Control:** In-flight configuration via UART API.



Specifications (preliminary)

1. Sensitivity:

- 100 dbm @ 500 MHz (~10+ km)
- 85 dbm @ 6000 MHz (~1 km)

2. Power supply:

- Wide input voltage from 6V to 50V DC
- Power consumption <5W under load
- Required voltage ripple <500 mV

3. Scanning speed:

- Up to 3 GHz/s in "fast track" mode
- 1 GHz/s in data streaming mode (Waterfall)

Capabilities

1. Detect and alert of presence of signals
2. Differentiate analog video from other types of signals
3. Provide real-time spectrum monitoring (300 MHz to 6000 MHz)

Limitations

1. No direction finding (AoA/TDoA)
2. Does not perform packet or analog signal analysis
3. No SDR functionality (can not decode or generate waveforms)